

# WFCH Update

*What's new in our Charity*

## WF Community Hub

### *In This Issue*

**Message from our CEO**

**Housing Advice Service**

**Projects supporting young people**

**Our befriending services**

**Community events**

**Spotlight on .....**

If you'd like any more information about anything in this news letter, contact us:

### **WF Community Hub**

18a Orford Road, London E17 9LN

020 8223 0707

info@wfchub.org

www.wfchub.org



## **Message from our CEO - Monwara Ali**

I am proud that our services continue to support the residents of Waltham Forest.

Our youth services are expanding with a new club opening up and our telephone befriending is going from strength to strength. We also started up a new community coffee morning which offers a place to meet people and helping to reduce social isolation.



We are very lucky to have the support of our amazing team of volunteers who we couldn't manage without. I'd also like to thank Starlighters Musical theatre company. They are a local community theatre group that puts on shows to raise money for our charity and their Panto in April was really well attended.

# Housing Advice Service



**COMMUNITY HUB  
HOUSING ADVICE**

**SERVING THE COMMUNITY OF  
WALTHAM FOREST**

**HOUSING CONCERNS?  
DO YOU NEED HOUSING ADVICE?**

Seek advice.  
Understand your options.

**ADVICE**

Housing possession proceedings  
Eviction  
Homelessness  
Disrepair  
Other housing related matters

**CALL OUR ADVICE LINE 07591 013930**  
**LINES ARE OPEN BETWEEN 10:00-12:00**  
**TUESDAY, WEDNESDAY & THURSDAY ONLY**

Trust for London  
Tackling poverty and inequality

Hackney  
Community  
Law Centre

WF Community Hub

Since its launch, our housing advice service has taken enquiries from local residents in need of housing support. This is a vital service and we are taking referrals from CGL, Citizen's Advice, WF Social Prescribing and Social Services.

Working alongside Hackney Law Centre, we have supported residents of Waltham Forest by providing legal advice and also we now have Shelter UK in our building on a regular basis to offer support.

**MORE INFO call 07591 013930**

# Projects supporting young people

Our Stronger Futures programme, funded by the Violence Reduction Unit and Rocket Science also supported by the Mayor of London, offers employability and social action for young people aged between 14-19.

We are launching our third cohort of 2022, if you are interested, please contact Shaun at [shaun@wfchub.org](mailto:shaun@wfchub.org)

Our youth provisions open in Walthamstow and Chingford are going from strength to strength. We have recently opened a new Club in our building. We have engaged 450 young people at our provisions.

## **MONDAY 4.30pm - 6.30pm**

Waltham Forest Community Hub  
18a Orford Road  
Walthamstow Village  
E17 9LN

## **WEDNESDAY 4.30pm - 6.30pm**

Priory Court Community Centre/MUGA  
11 Priory Court  
Walthamstow, E17 5NB

## **TUESDAY 4.30pm - 6.30pm**

Community Room  
128-132 Aldriche Way  
Chingford, E4 9LU

## **FRIDAY 6pm - 8pm**

Spaces Made Safer  
Salisbury Hall  
Walthamstow Avenue  
Chingford  
E4 8ST

**STRONGER FUTURES**  
ARE YOU 14 - 19 YEARS OLD AND LOOKING TO LEARN NEW SKILLS?  
WANT TO IMPROVE YOUR CHANCES OF GETTING A JOB?

**EMPLOYABILITY AND SOCIAL ACTION**

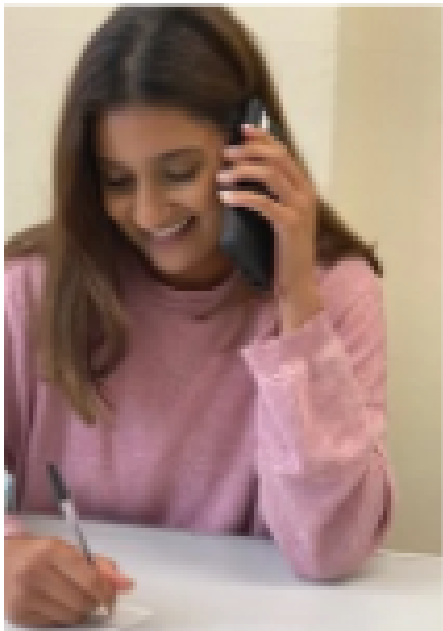
**ARE YOU READY TO TAKE THE NEXT STEP!**

- UNLOCK NEW SKILLS !!!
- GET AN INTERVIEW !!!
- 1-2-1 MENTORING / COACHING
- GAIN EMPLOYABILITY SKILLS!

TO REGISTER CONTACT  
SHAUN@WFCHUB.ORG OR  
HAMZA@WFCHUB.ORG  
TEL: 07716 736315

WF Community Hub MAYOR OF LONDON ROCKET SCIENCE BTEG

# Our Befriending Services



Our befriending service incorporates telephone befriending for Waltham Forest residents aged 18-59; a lunch club for senior citizens and a community coffee morning.

Our services support vulnerable people suffering mental health related issues or are isolated for other reasons from the community.

Our coffee morning launched in February. It is a drop in service and is growing steadily and is a great place for local people to pop in for a coffee, a chat and to meet new people.

The senior citizens attending our lunch club love coming here and the numbers are rising. We offer a two course hot lunch and activities. We are also arranging trips to the seaside this summer.



We can take referrals from any professional organisation for the above services and also take self-referrals. For more information:

**[www.wfchub.org](http://www.wfchub.org)** or contact  
**[sandra@wfchub.org](mailto:sandra@wfchub.org)** or call **020 8223 0707**.

If you are interested in sparing a few hours a week to support your community by becoming a volunteer, please contact our Befriending Volunteer Coordinator Sonita via email **[sonita@wfchub.org](mailto:sonita@wfchub.org)**



# Our Community Events

Join us at our community events in our building -  
18a Orford Road, E17 9LN

---

## Community theatre

Join us for our  
Jubilee Celebration  
on Sunday 17th  
June.

### TO BOOK

[www.ticketlab.co.uk](http://www.ticketlab.co.uk/events/wfchub)  
/events/wfchub



**RED, WHITE & BLUE**  
A Jubilee Celebration  
**Sunday 17th July**  
**5pm**

**TICKETS**  
Adults £10  
Over 60s/under 16s £5

**Waltham Forest Community Hub**  
18A Orford Road, Walthamstow  
London E17 9LN

[www.ticketlab.co.uk/events/wfchub](http://www.ticketlab.co.uk/events/wfchub)

---

## Meet the Funder event

**Tues 19th July 2 - 4pm**

An opportunity for charities and community groups to speak to our funders Trust for London and The National Lottery about how to access funding grants.

**TO BOOK** [www.ticketlab.co.uk/events/wfchub](http://www.ticketlab.co.uk/events/wfchub)

---

## Venue to hire

Our building is available to hire for weddings; parties; meeting and community events. More info available on our website

[www.wfchub.org](http://www.wfchub.org)



# Spotlight on .....

## Sonita Turner, Befriending Volunteer Coordinator

Sonita has been with our charity for over 12 years. She began her journey with us as a youth work volunteer and now recruits and co-ordinates our volunteers!

Sonita has written us a poem that signifies how she feels about our charity .....



### **The Hub is where the Heart is. written by Sonita Turner, May 2022 ©**

It's a heart made of butterfly wings - setting free the most creative & innovative of things!

It's the arms that catch you if you should fall - but then that rarely happens here when you are made to feel so very tall.

It's the coming together of communities for the good of one and all - it's the finding of the barriers - and then gently breaking down those walls...

It's compassion and empathy in the shape of a warming mug and a listening ear - it's the genuine authenticity, a kind hug, or a much-needed, encouraging, inspiring & comforting cheer!

It's the empowering of the many other local hearts too, who also want to spread their beautiful, helping wings and fly free...

It's the knowing that there **MUST** be change - but that, "that change **MUST** start & come from Me"! - (& everyone of us!)

It's the young and the elderly joining hands in the middle of the path - sharing wisdom, asking questions, and a good old-fashioned serving of cake and custard and a musical heart-warming laugh!

The Hub really is where the heart is - and it truly is one of a kind - each one of us is a single heart-beat; that when you bring us all together we can create a constant perfect rhythm where no one ever gets left behind!